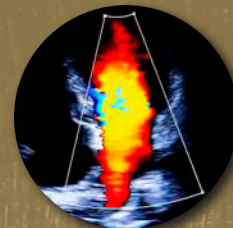




NATIONAL BOARD OF ECHOCARDIOGRAPHY, INC.



Leadership Spotlight



Neil J. Weissman, MD

NBE Board Member

Positions and Organizations

Chief Scientific Officer, MedStar Health
President, MedStar Health Research Institute

Neil J. Weissman, MD, FACC, FASE, is the Chief Scientific Officer for MedStar Health and President of MedStar Health Research Institute. Dr. Weissman is a professor of medicine at Georgetown University School of Medicine and an internationally recognized cardiologist with expertise in echocardiography and clinical trials.

As chief scientific officer, he provides leadership for the development and implementation of specific scientific priorities, with a commitment to further advancing MedStar Health as an academic healthcare system. As president of the Research Institute, he is responsible for the overall strategic and operational direction of the research arm of MedStar Health.

Dr. Weissman's research interests include the use of cardiovascular ultrasound imaging in clinical trials and the development of artificial intelligent applications for imaging. He has served as principal investigator for numerous national and international multi-center trials served on several national organizations and editorial boards and written hundreds of original reports published in high profile peer-reviewed journals. He is frequently invited to serve as an expert on U.S. Food and Drug Administration advisory panels and

National Institutes of Health commissions and held many national leadership positions including past president of the American Society of Echocardiography and past chair of the American College of Cardiology's Imaging Council.

Dr. Weissman received his medical degree from Cornell University Medical College in New York. He completed his internship, residency and chief residency in Internal Medicine at New York Hospital. He followed his residency training with a clinical and research fellowship in Cardiology and a fellowship in Cardiac Ultrasound at Massachusetts General Hospital in Boston.

Q&A

What inspired you to pursue a career in this field?

From my first physiology course in college, I was always attracted to cardiology so upon entering medical school I pursued opportunities to do cardiology research. I was very fortunate to work with a wonderful mentor, Dr. Dick Devereaux at Cornell, examining echocardiograms in patients with mitral valve disease. For more than 25 years, I have remained committed to advancing health through research in echocardiography and clinical trials.

What influenced you to join the NBE Board of Directors?

One of my other mentors, Dr. Arthur Weyman, was involved in creating the NBE and I was among the first to take the certifying exam. Since then, I volunteered to support the organization by serving on the writing committee and then later on the certifying committee. NBE is a critical part of maintaining high quality in our field and I feel privileged to contribute.

What excites you most about the direction of the NBE, and how will you continue to contribute to it?

The technical advances in assessing knowledge is rapidly changing, as are the needs and expectations of busy clinicians. NBE is well positioned to embrace these advances and keep echocardiography, and certification in special competence, at the forefront. I am excited to take part in bringing NBE to the next generation of certification.

NBE is thrilled to spotlight leadership for their accomplishments and dedication to the cardiovascular profession.