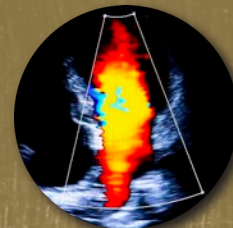




# NATIONAL BOARD OF ECHOCARDIOGRAPHY, INC.



## Leadership Spotlight



**Nova Panebianco, MD,  
MPH, FACEP**

**NBE Board Member**

### **Positions and Organizations**

Associate Professor of Emergency Medicine at the  
Hospital of the University of Pennsylvania,  
Emergency Medicine Ultrasound Division Director,  
Co-Director Clinical Ultrasound Fellowship

Nova Panebianco, MD, MPH, FACEP completed Emergency Medicine (EM) residency training at North Shore University Hospital (Manhasset, NY) and fellowship training in Emergency Ultrasound at the University of Pennsylvania (Philadelphia, PA). Dr. Panebianco also obtained a Master's of Public Health in 2004 at the State University of New York at Albany. She joined the faculty of the University of Pennsylvania in 2009 after being Co-Director of EM Ultrasound in New York City for a year. She was the EM Fellowship Director for more than 5 years until promoted to the role of Division Director of EM Ultrasound in the Department of Emergency Medicine at the University of Pennsylvania.

The ultrasound fellowship at UPenn has graduated over 30 fellows and during her role as Fellowship Director she created the first collaborative, sustainable, Internal Medicine, Family Medicine, Emergency Medicine fellowship training program in Northern America. Additionally, she trains 53 EM residents per year on clinical ultrasound and developed a 4-year vertically integrated ultrasound curriculum in the Perelman School of Medicine.

Nova has published extensively in the field of clinical ultrasound including over 50 manuscripts, chapters, editorials, and case reports. Her research is focused on procedural ultrasound, critical care, and women's health. Additionally, she has published a book in Emergency Ultrasound that is sold nationally and internationally. She lectures nationally and internationally on the topic of clinical ultrasound.

In terms of national leadership, Dr. Panebianco is the Past-President of the American College of Emergency Physician Ultrasound Section, Past-Chair of the Society for Academic Emergency Medicine Academy of Emergency Ultrasound. Dr. Panebianco is the current President of the Society of Clinical Ultrasound Fellowships, and is the Point-of-Care Ultrasound Director for Penn Medicine. She serves on the Critical Care Echocardiography Board Exam Writing and Certification committees. She is thrilled to serve as an NBE Board of Director to ensure high-quality, inclusive, and evidence-based use of clinical ultrasound across specialties.

## Q&A

### **What inspired you to pursue a career in this field?**

There are so many reasons to choose this career. The incorporation of echocardiography, particularly in emergency settings with undifferentiated dyspnea and/or chest pain is essential to exceptional patient care. In scenarios where seconds matter there is no greater imaging tool than ultrasound. In addition, it brings the provider back to the bedside, leverages technology to provide cutting-edge care, and yields huge opportunities for education and scholarship.

### **What influenced you to join the NBE Board of Directors?**

The answer for this question is easy... it's the people. I had the wonderful opportunity to work with several current NBE Board of Director members and staff through my work with CCEeXAM and their commitment to quality, standardization, scholarship, and patient care inspired me.

### **What excites you most about the direction of the NBE, and how will you continue to contribute to it?**

Honestly, I'm excited for it all. The opportunity to collaborate, interface with stakeholders from across the house of medicine, and engage in meaningful progress is very motivating. As technology advances there is great opportunity to develop materials that are fair and rigorous. I intend to contribute to the Board of Directors by adding my unique perspective on clinical ultrasound, being innovative, and collaborative.

---

*NBE is thrilled to spotlight leadership for their accomplishments and dedication to the cardiovascular profession.*