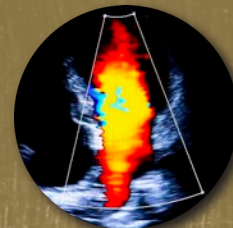




NATIONAL BOARD OF ECHOCARDIOGRAPHY, INC.



Leadership Spotlight



Wyman W. Lai, MD, MPH, MBA

NBE Board Member

Organization
CHOC Children's

Position
Assistant Division Chief of Cardiology

Dr. Wyman Lai is a leading, nationally recognized pediatric cardiologist who treats the full spectrum of heart conditions at CHOC Children's. He is an expert in the areas of fetal cardiology and non-invasive imaging for heart disease in fetuses and children. Dr. Lai's research interests include the echocardiographic evaluation of complex congenital heart disease and the use of advanced imaging techniques for the assessment of cardiac function. His recent interests include the role of artificial intelligence in pediatric cardiology. He has lectured extensively in the United States and internationally.

Dr. Lai serves as Assistant Division Chief of Cardiology at CHOC Children's Specialists. He has served as the Chair of the Pediatric and Congenital Council Board of the American Society of Echocardiography (ASE) and currently sits on the National Board of Echocardiography Board of Directors. Dr. Lai is a prolific author who has written many expert publi-

cations, books, and over 100 peer-reviewed articles. He has contributed to several high-level textbooks utilized throughout the country.

Dr. Lai graduated from the Brown University Program in Liberal Medical Education, the Harvard School of Public Health, and, recently, the UCI Paul Merage School of Business. He completed training in pediatrics and pediatric cardiology at the UCLA Medical Center, Los Angeles. Dr. Lai underwent advanced training in congenital cardiac MRI at Boston Children's Hospital.

Q&A

What inspired you to pursue a career in this field?

I enjoyed taking care of children, and I was fortunate to have several mentors who were experts in pediatric cardiac imaging. The diagnosis and treatment of congenital heart disease has been revolutionized by the introduction of non-invasive imaging techniques, which are readily available and associated with almost no risk.

What influenced you to join the NBE Board of Directors?

The NBE has a very important role in ensuring quality of care. The NBE examination documents competence, and, beyond that, the NBE plays an important role in promoting excellence in the medical profession. I joined the NBE Board to add my voice to those who are pushing for uniform access to high-quality care.

What excites you most about the direction of the NBE, and how will you continue to contribute to it?

I think the NBE is a dynamic organization that tries to anticipate the needs of both the patients and the healthcare providers in the field echocardiography. My job on the NBE Board is to ensure that decisions that impact the care of children are well thought out.

NBE is thrilled to spotlight leadership for their accomplishments and dedication to the cardiovascular profession.