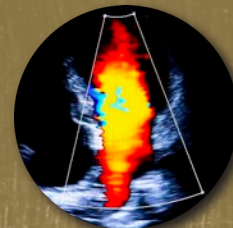




# NATIONAL BOARD OF ECHOCARDIOGRAPHY, INC.



## Leadership Spotlight



**Sherry Barrow, MPA**

**NBE Officer**

**Organization**

National Board of Echocardiography

**Position**

Executive Director

Ms. Barrow has served as Executive Director of the National Board of Echocardiography (NBE) since 2014. Sherry's responsibilities include managing financial operations, staff, establishing business goals, coordinating board of directors' organizational activities and overseeing daily operations.

Previously, Sherry worked as a Community Relations Representative at Synergy Home Care of the Triangle.

She also spent 10 years at the American Society of Echocardiography as the Director of Corporate Relations.

## Q&A

### **What inspired you to pursue a career in healthcare?**

In 2001 when I began with The American Society of Echocardiography, I honestly didn't know what an echocardiogram was! Wow, have I learned a lot since then. Originally, I wanted to pursue a career in healthcare as I saw my grandparents aging struggling with heart related issues.

### **What excites you most about the direction of the NBE, and how will you continue to contribute to it?**

I could write pages on this topic. NBE has recently undergone strategic planning sessions with the Board of Directors. These sessions have produced many wonderful ideas.

The real possibility of a longitudinal assessment product directly correlates to staff and BOD members listening to our examinees and how they envision the recertification process in the future.

I'm a firm believer in an organization being only as good as its staff and volunteers. The NBE staff is extremely lucky to work with such amazing volunteer leadership. As NBE continues to take on new projects and our staff grows, I will strive to find individuals who are as dedicated to our purpose as the current staff.

---

*NBE is thrilled to spotlight leadership for their accomplishments and dedication to the cardiovascular profession.*